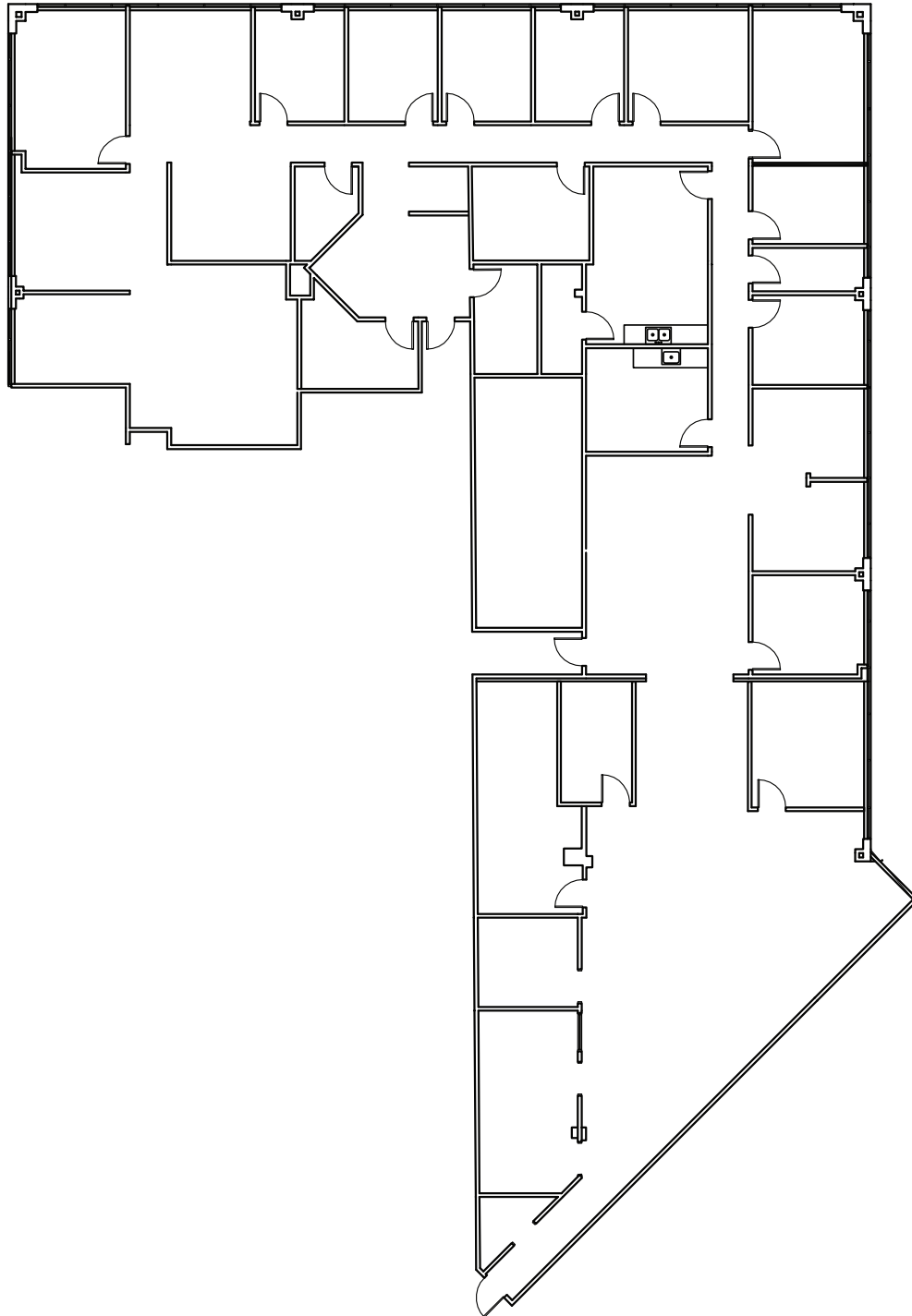


GRAND PLAZA OFFICE CENTER

# Suite 217-N/220-N - 7,974 square feet

14497 N DALE MABRY HWY • TAMPA, FL • 33618



The above floor plan is not to scale. The available space shown is believed to be correct but is subject to change.

For additional information, contact:

**Thomas Hernandez, SIOR, CCIM**  
(813) 494-4090 mobile • (813) 908-1727 office  
thernandez@ciminelli.com

