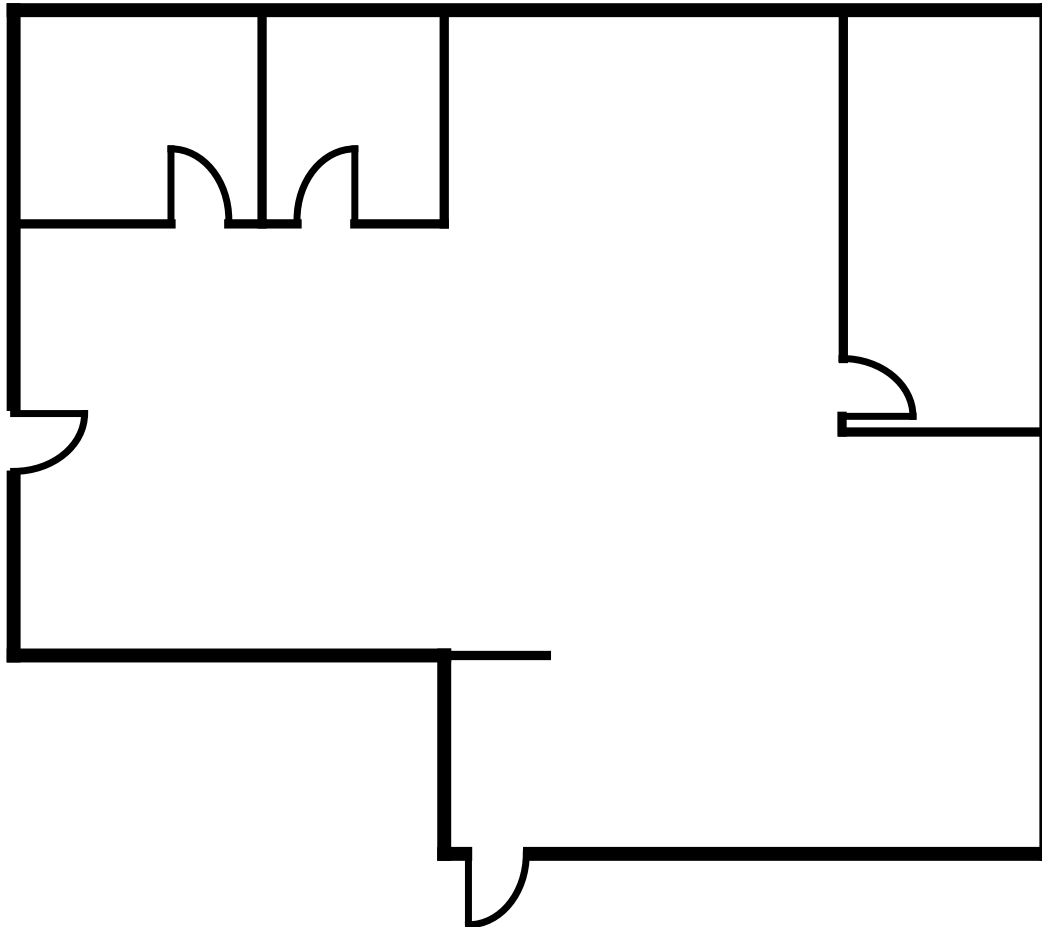


GRAND PLAZA OFFICE CENTER

Suite 135-N - 2,050 square feet

14497 N DALE MABRY HWY • TAMPA, FL • 33618



The above floor plan is not to scale. The available space shown is believed to be correct but is subject to change.

For additional information, contact:

Thomas Hernandez, SIOR, CCIM
(813) 494-4090 mobile • (813) 908-1727 office
thernandez@ciminelli.com

